

The LDS110H (side-shifting) fork positioner [hereinafter referred to as "fork positioner"] positions the fork (cargo side-shifting) without human interference by means of a hydraulic driver, and not only improve the handling efficiency, but reduce labor intensity, decrease the damages to cargoes. The fork positioner is designed and manufactured by ourself and have been in the market for many years. Now has becoming a mature and gradually formed series after constant improvements, tackle key technical problem of key components and comprehensive testings.

The manual is designed to familiarize operators with fork positioned, benefit of operators with better standard operations.

The manual contains important notes concerning safe, proper and economic working with the equipment. Strict observation of these notes will help to avoid risks, reduce repair costs and down time, and increase the reliability and useful life of the equipment.

In addition to the instructions contained in this manual, all pertinent national and local regulations relating to safety and environments protection must be observed in full. This operating manual must be kept available for ready reference at the equipment's place of use. The manual must be read and followed by all persons involved in work, e



Fork Positioner User's Manual



..... 5

1.1 Safety notes and marks..... 5

1.2 Organizational notes..... 5

1.3 Operator's safety notes..... 6

1.4 General hazard notes..... 9

..... 10

2.1 Installation requirements..... 10

2.2 Installation methods..... 11

2.3 Operation inspections..... 13

..... 14

..... 14

4.1 Inability to position the fork..... 14

4.2 Inability to side shift the fork..... 14

4.3 Abnormal positioning or side shifting..... 15

..... 15

..... 15



Fork Positioner User's Manual



The following marks and symbols are used in this operating manual to highlight details holding special importance :

- ▲ used for identifying big or direct dangerous situation , to avoid injury and property damage . If not able to avoid the dangerous situation , can cause serious casualties.
- ▲ used for potential dangerous situation , to avoid injury and property damage . If not able to change the dangerous situation , can cause serious casualties.
- ▲ used for used for potential dangerous situation , to avoid injury and property damage . If not able to change the dangerous situation , can cause serious casualties or property damage.
- ▲ Used for potential hazardous situations, if these hazardous situations cannot be changed, they may cause serious casualties.





Fork Positioner User Manual

Operating , maintenance and servicing / repair personnel must have read and understood the operating manual before commencing work on the equipment.

All safety and danger notices on the fork positioned must be observed.

The equipment must be shut down immediately in the occurrence of any safety-related change on the equipment or in its workings and the malfunction must be reported to the officer responsible

Working with and on the equipment may only be carried out by responsible and properly trained personnel , who must be of the legally required minimum age.

Operating temperature range range of 20 to 40 , relative humidity should be less than 85% eve





Fork Positioner User's Manual

Moving, reciprocating m M

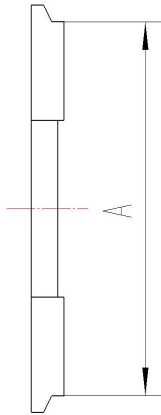


Fork Positioner User's Manual

Note the following tightening torques which are valid for screws



Fork Posi t



Installation	A ISO standard	
	Min	Max
Grade 2	380.0mm	381.0mm
Grade 3	474.5mm	476.0mm

2.1.5 To comply with the industrial standard , it is crucial to ensure that the attachment moves in the direction corresponding to the multi – way valve control handle of the forklift as indicated below :

Control functions of the handle

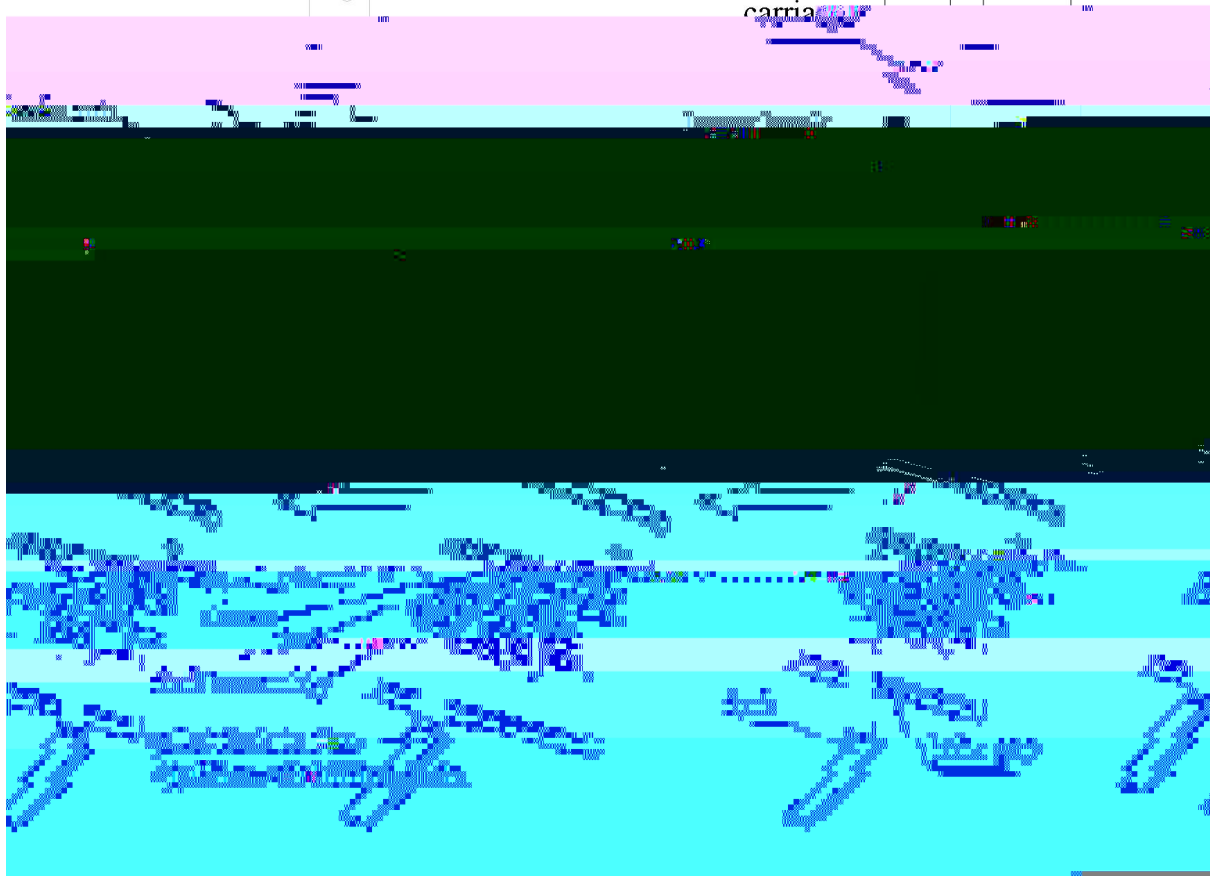
Function	Attachment movement	Multi-way valve handle movement
Side shifting load	Right shift	Backward or upward
	Left shift	Forward or downward
Positioning fork	Close	Backward or upward
	Open	Forward or downward

2.2.1 Mount on the forklift

- 1 Release the 4 locknuts on the lower hook (figure 1) and hang the positioned on the carriage.
- 2 Fix the frame on the forklift carriage with the lower hook and lock the locknut to the moment of 140N.m(figure 2).
- 3 Attach the fork into the carriage from the fork gap(figure 3).
- 4 Release locknut M16 of fork assembly , hang up the whole fork assembly(figure 4).

Example

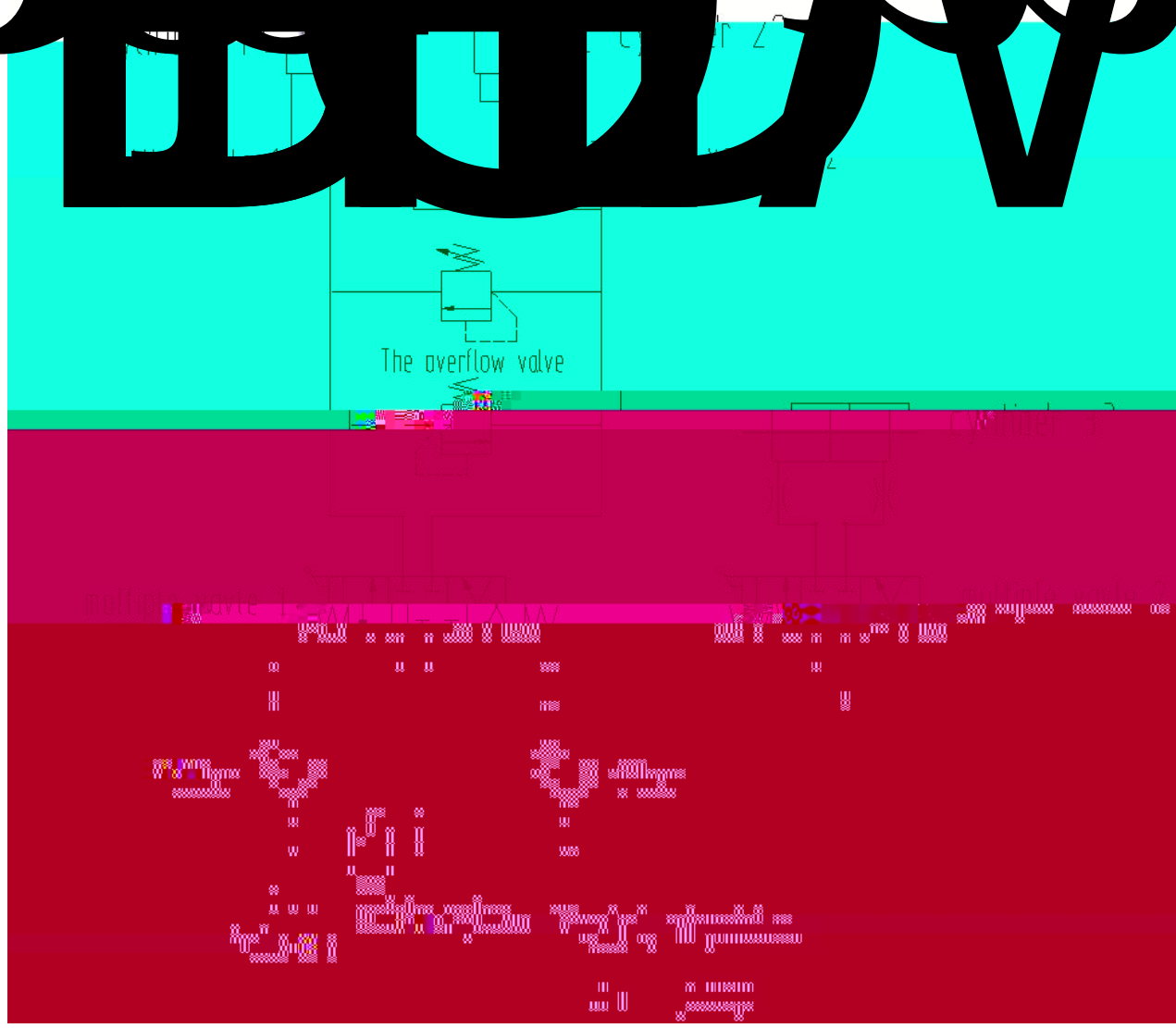
5 Lay the hose on the ground and connect it to the carrier. Use the manual installation diagram :



2.2.2 Connect the rubber hose

Select a proper length of rubber hose and join it

OPERATION



2.3.1 Before any operation, first operate the multiway valve handle to make yourself in accordance with the control functions of the handle. Satisfy yourself that the handle movement complies with the foregoing Control Functions of the Handle.

2.B2



Both load and the central distance of load gravity shouldn't be longer than the rated range on the label of a fork positioner . When the central distance of load gravity is longer than the rated range , its actual bearing capacity will reduce . After stopping operating the forklift , relieve the pressure in the hydraulic system and do some necessary maintenance.

The following operations must be prohibited :

Lifting a load on a single fork

Adjusting the fork distance with load;

Moving goods by the side shifting function of the positioner;

Side shifting or adjusting the fork distance when the forklift is swerving;

Mounting a pusher without locating the pin in a central notch on the upper bar;

Using a pusher for non-designed purpose;

Operating a pusher which is in trouble;

Operating a pusher when there is a person or barrier in its working area;

Doing welding on a pusher;

Carrying a person on the pusher or the fork;

Being hit by external force while pusher working;

The size of the goods is too large

iu zλ su qo

0u A]w BSH





4.2.1 Check if the system provides the required pressure and e r s



Fork Positioner User's Manual

12 months after receipt of the cargo by the buyer;

1000 hours of statutory working days after installation of the attachment;

Whichever comes earlier.

2 The buyer and the final user are advised that :

They should comply with our User's Manual in the installation , commissioning , operation and maintenance of our products to enable successful execution of our quality assurance;

They may repair the attachment with our prior authorization , provided that they shall not remove or replace any part of the product without due approval;

Any unauthorized repair or modification of the our attachment product or any unauthorized use of parts not provided by us , or any incompliance with our Use's Manual , Inspection Specifications . Operation Manual or Maintenance Instructions may lead to disqualification of our quality assurance;

We assume no responsibility for any loss of , or any personal injury or property damage(including any indirect loss or damage)in connection with , the attachment product provided once it is owned or used by the buyer or final user.