

CPCD20/25/30/35 /40/45/50

KU6Y4(2)R-3/KU5Y4(2)R-2/W3Y4(2)R-2
W4Y4(2)R-2/XC7Y4(2)R-2/Q3Y4(2)R-2
KU4Y4(2)R-3-06/QC13Y4(2)R-3-6
QC7Y4(2)R-3-06/M1Y2R-3-06

让世界更合力
EMPOWER THE WORLD



ANHUI HELI CO., LTD.

Add / No.668, FangXing Road, Hefei, China
(Post Code) / 230000

(Customer Service Hotline) / 4001-600761
(Service Tel) / +86-551-63689000,63648005





01-02



03-04



05

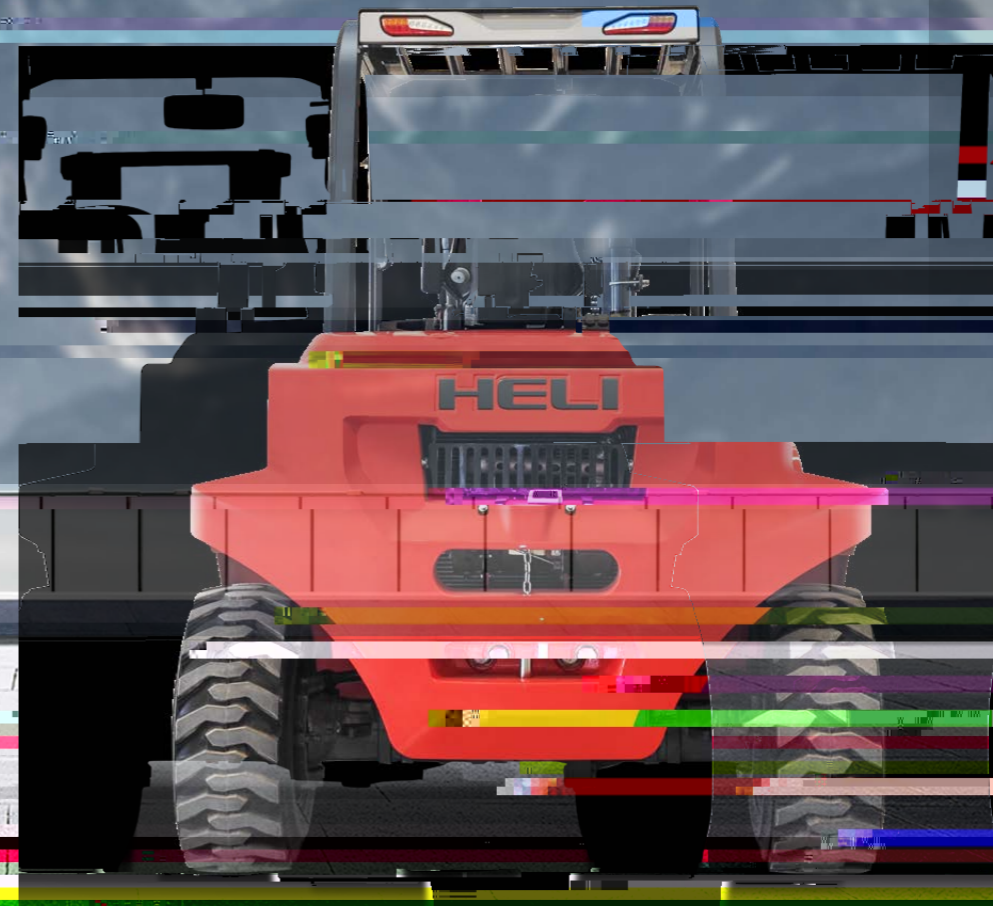


06

R 2-5t

10°/12°

HELI



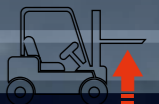
2-3.5t: 18-19km/h
 2-3.5t: 23-24km/h
 4-5t: 28-30km/h



2-3.5t: 60%
 4-5t: 40%

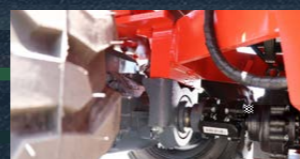


2-3.5t: 510mm/s
 4-5t: 500mm/s

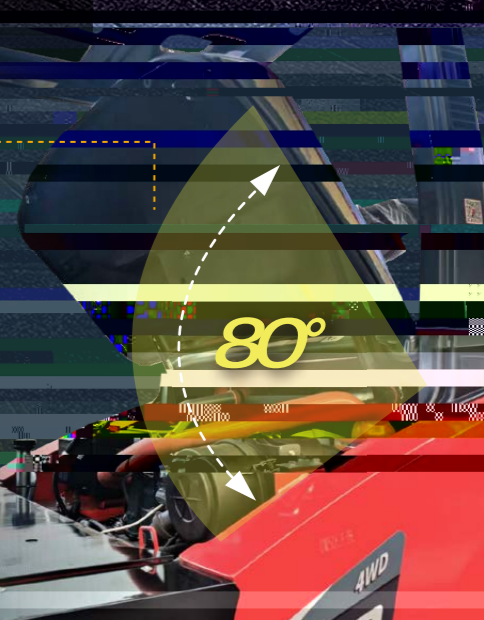


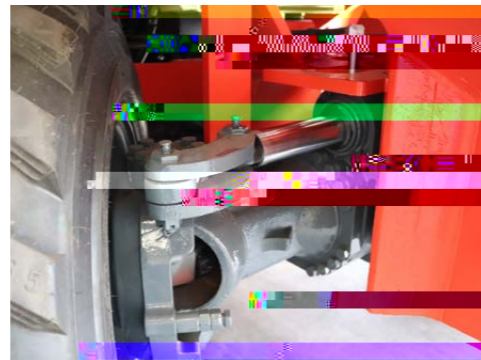
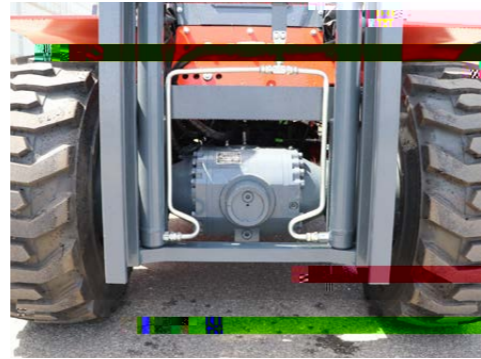
2-3.5t: 560mm/s
 4-5t: 550mm/s

• 2-3.5t 3 3 2 1 4-5t 3 1



80°





2-3.5t

4-5t

2-3.5t
4-5t



LED

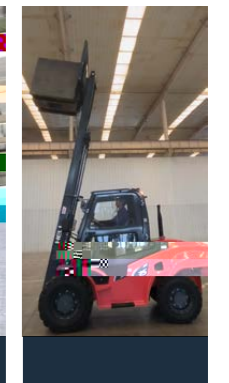
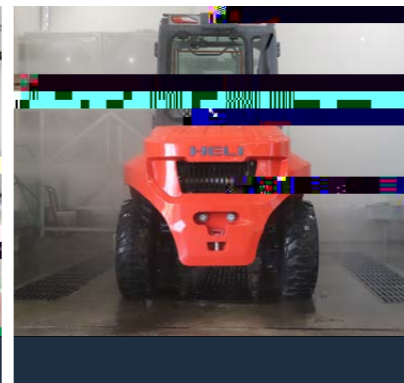
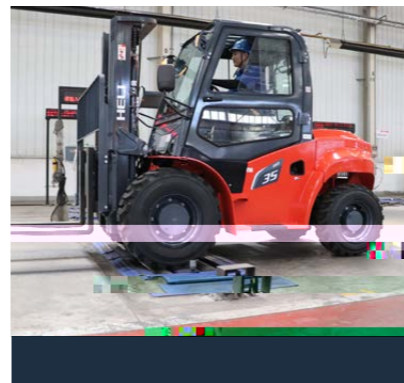
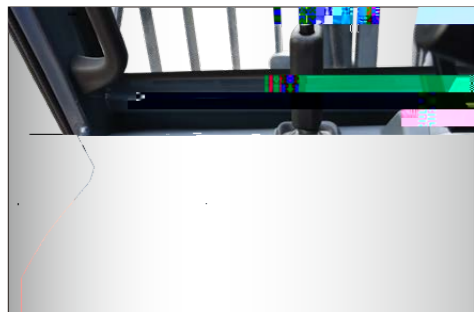


IP65

OPS



- +
- USB
-
-



1.01									
1.02				CPCD40	CPCD45	CPCD50			
1.03			kg	4000	4500	5000			
1.04			mm	600					
1.05									
1.06									
2.01		H	mm	3000	3000	3000			
2.02		H1	mm	2380					
2.03		H2	mm	4380					
2.04		H3	mm	150					
2.05		H4	mm	2580					
2.06		H5	mm	320					
2.07		H6	mm	1208					
2.08		H9	mm	690					
2.09	/	(L/L')	mm	4660/3440					
2.10		L1	mm	2150					
2.11		L2	mm	685					
2.12		L3	mm	605					
2.13		W1	mm	2050/1980					
2.14	/	W3/W2	mm	1650					
2.15	/	W5	mm	1340/300					
2.16		r	mm	4520					
2.17		Ra	mm	6440					
2.18	/	/	deg.	10°/12°					
2.19		(L4xWxT)	mm	1220x155x50					
3.01	/		km/h	30					
			km/h	28					
3.02	/		%	45					
3.03	/		kN	60					
3.04	/	/	mm/s	500/550					
3.05	/	/	mm/s	450/400					
4.01			kg	7450 7550	7800 7900	8100 8200			
5.01	X=	/		2X/2					
5.02	/								
5.03	/			385/65-22.5-16TL/12-16.5-10-TL					
5.04				-					
5.05									

V3307	+	+DOC+DPF+EGR	CPCD40-50-KU4Y4(2)R-3-06	12/95	55.4/2200	335/1400	3.33	4-94x 120	/ /
V35-88C4#98	+	+DOC+DPF+EGR	CPCD40-50-QC13Y4(2)R-3-6	12/95	65/2200	350/1800	3.47	4-98x 115	
4C6-88C31 498	+		CPCD40-50-QC7Y4(2)R-3-06	12/95	65/2200	350/1800	3.47	4-98x 115	
S6S-T	VE	+	CPCD40-50-MIY2R-3-06	2x 12/80	63.9/2300	285/1700	4.996	6-94x 120	A

	mm	500mm kg			mm	4-5t	kg			° /
		4t	4.5t	5t			4t	4.5t	5t	
M260	2600	4000	4500	5000	2200	150	7716	8066	8386	10/12
M270	2700	4000	4500	5000	2250	150	7728	8078	8398	10/12
M300	3000	4000	4500	5000	2400	150	7762	8112	8432	10/12
M330	3300	4000	4500	5000	2550	150	7796	8146	8466	10/12
M350	3500	4000	4500	5000	2650	150	7819	8169	8489	10/12
M370	3700	4000	4500	5000	2750	150	7842	8192	8512	10/12
M400	4000	4000	4500	5000	2950	150	7931	8281	8601	10/12
M425	4250	4000	4500	5000	3075	150	7951	8301	8621	10/12
M450	4500	4000	4500	5000	3200	150	7980	8330	8650	10/12
M475	4750	3500	4000	4250	3325	150	8009	8359	8679	10/12
M500	5000	3200	3600	4000	3450	150	8036	8386	8706	10/6
M550	5500	2900	3200	3600	3700	150	8142	8492	8812	10/6
M600	6000	2600	3000	3300	3950	150	8198	8548	8868	10/6

	mm	500mm kg			mm	4-5t	kg			° /
		4t	4.5t	5t			4t	4.5t	5t	
ZM261	2610	4000	4500	5000	2240	900	7812	8162	8482	10/12
ZM271	2710	4000	4500	5000	2290	950	7827	8177	8497	10/12
ZM300	3000	4000	4500	5000	2435	1095	7762	8112	8432	10/12
ZM330	3300	4000	4500	5000	2585	1245	7913	8263	8583	10/12
ZM350	3500	4000	4500	5000	2685	1345	7942	8292	8612	10/12
ZM375	3750	4000	4500	5000	2/	1470	7978	8328	8648	10/12
ZM400	4000	4000	4500	5000		1595	8035	8385	8705	10/12
ZM450	4500	3700	4200	4500		1845	8107	8457	8777	10/12
ZM500	5000	3200	3600	4000		2095	8177	8527	8847	6/6
ZM550	5500	2900	3200	3600		2345	8296	8646	8966	6/6
ZM600	6000	2600	3000	3300		2595	8345	8695	9015	6/6

- 1 LCD
- 2 CAN
- 3 IP66
- 4 -30 75 -40 85
- 5
- 6 20 6
- 7
- 8
- 9
- 10
- 11 GPS

